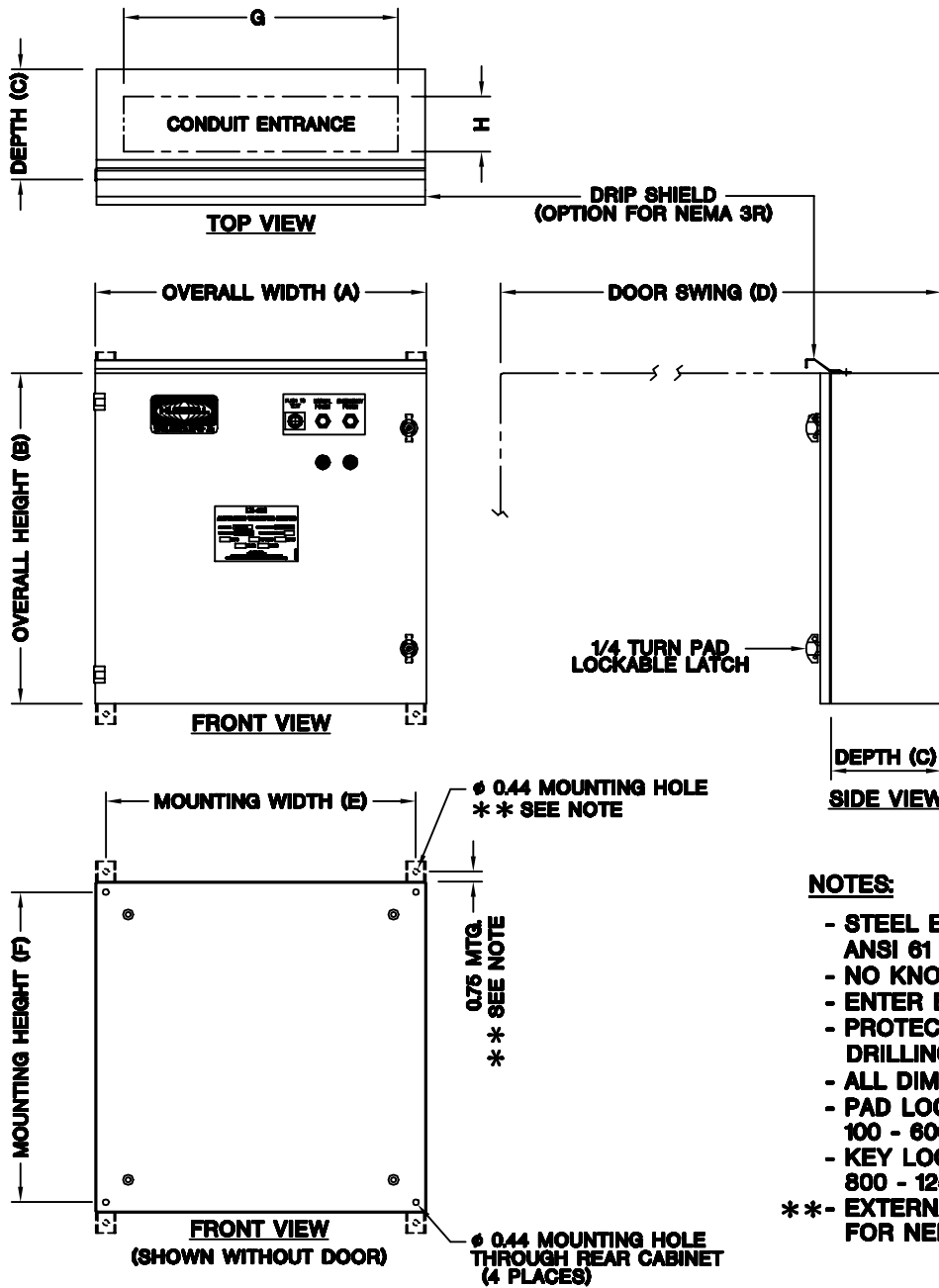


Dimensions and Data
Non-Automatic & Automatic Transfer Switch
100 Amps Through 1250 Amps

LX440/450



ENCLOSURE TYPE	
	NEMA 4/12 (STD)
	NEMA 3R
	NEMA 4X **



NOTES:

- STEEL ENCLOSURE FINISHED WITH ANSI 61 GRAY POLY (EXCEPT NEMA 4X)
- NO KNOCKOUTS
- ENTER EITHER TOP OR BOTTOM
- PROTECT INTERNAL EQUIPMENT FROM DRILLING CHIPS
- ALL DIMENSIONS ARE IN INCHES
- PAD LOCKABLE LATCHES FOR 100 - 600 AMPS
- KEY LOCKABLE HANDLE FOR 800 - 1250 AMPS
- ** - EXTERNAL MOUNTING FEET PROVIDED FOR NEMA 4X OPTION ONLY

AMPS	A	B	C	D	E	F	G	H
100	20	20	8	28	18.50	18.50	16	4
200	24	24	8	32	22.50	22.50	20	4
260 - 400	24	48	12	36	22.50	46.50	20	8
600	30	56	16	46	28.50	54.50	26	12
800 - 1250	36	66	16	52	-	-	32	12

•FREE STANDING ENCLOSURES



HUBBELL / INDUSTRIAL CONTROLS, INC.
 50 Edwards Street
 Madison, Ohio 44057
 Phone: (440) 428-1161 Fax: (440) 428-7635

DATE:	REV.
07/12/2001	-
DRAWING NUMBER:	
45AE0011	