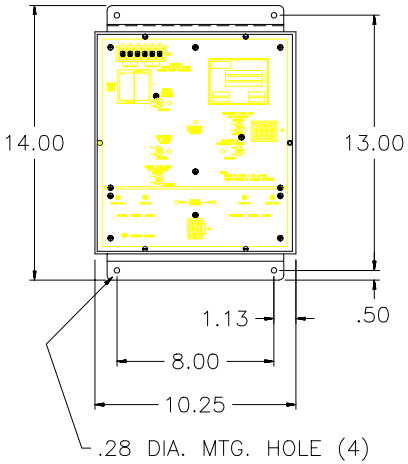


LX-301 CONTROL MODULE
SHIPPED SEPARATELY



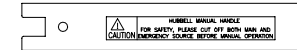
TRANSFER SWITCH 100 AMP 3 POLE OPEN PANEL
WITH OR WITHOUT TIME DELAY NEUTRAL

NOTES:

1. WIRE TERMINALS AL OR CU #14 TO 1/0
2. TRANSFER SWITCH IS SUPPLIED WITH 4 DOUBLE POLE DOUBLE THROW AUX CONTACTS PER SIDE
3. WIRE HARNESS CONNECTED TO CONTROL POWER TERMINAL BLOCKS IS 24 INCHES LONG AND TERMINATED WITH PLUGS TO CONNECT TO LX-301 CONTROL MODULE SHIPPED SEPARATELY.

MAXIMUM RATINGS SPECIFICATIONS

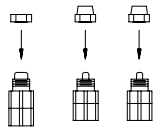
RATED VOLTAGE	480V AC
RATED CURRENT	100A
RATED FREQUENCY	50/60 Hz
POLES	3 POLES
CONNECTION TYPE	FRONT



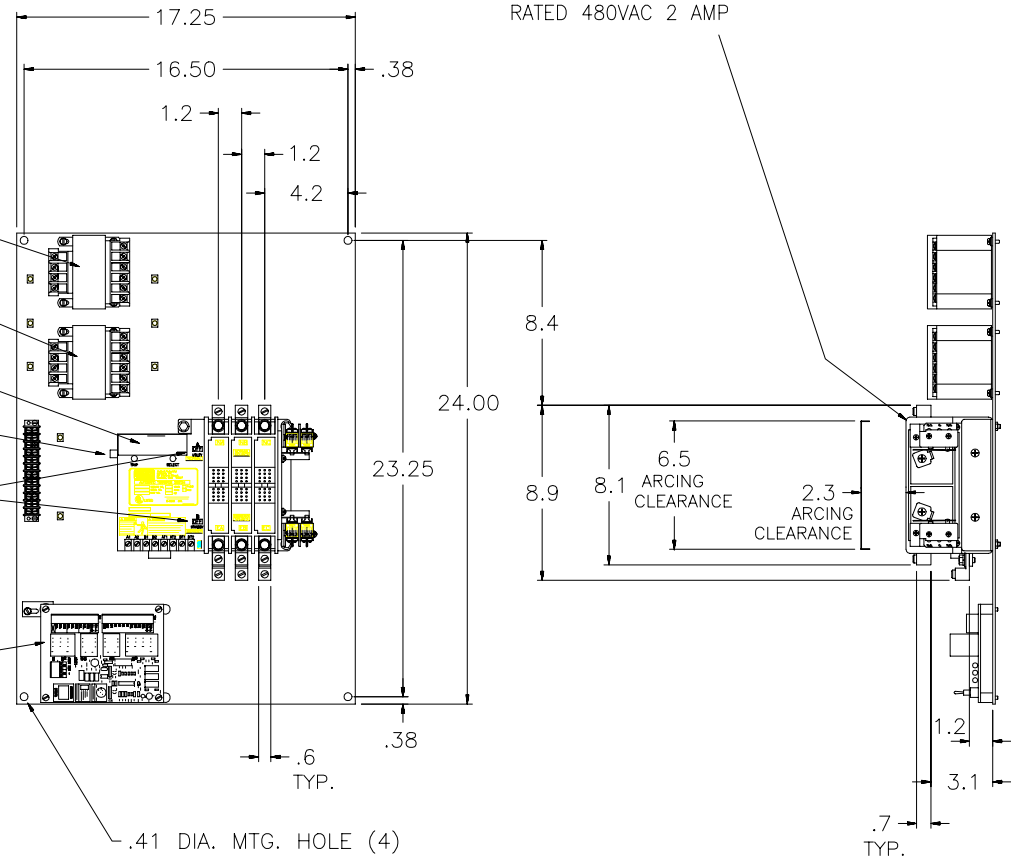
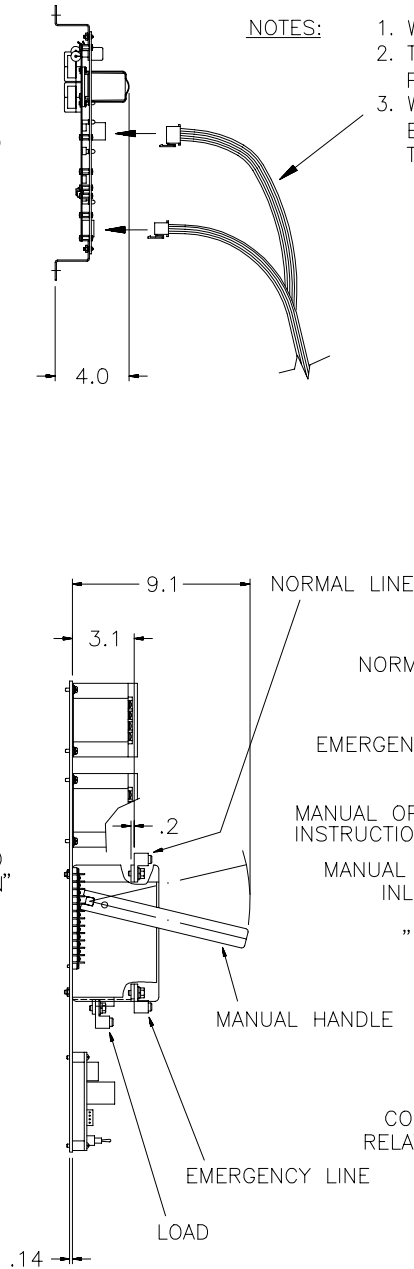
MANUAL HANDLE SHIPPED WITH TRANSFER SWITCH
(SHOWN AT 1.5X FOR CLARITY)

CONDUCTOR SIZE	TIGHTENING TORQUE
14 - 10 AWG	35 in-lb
8 AWG	40 in-lb
6 - 4 AWG	45 in-lb
2 - 1 AWG	50 in-lb
1/0 AWG	50 in-lb

4. WIRE HARNESS CONNECTED TO POSITION INDICATING LIGHTS AND 2 POLE "PUSH TO TEST BUTTON"
5. BUTTONS CONTACTS ARE RATED NEMA AC A600.
6. PUSHBUTTON AND LIGHTS ARE 22MM, RATED FOR NEMA 4X, AND UL LISTED



PUSHBUTTON
RED LIGHT
GREEN LIGHT



AUXILIARY SWITCHES
QUANTITY OF 2 DOUBLE POLE DOUBLE THROW
ON BOTH SIDES
RATED 250VAC 10 AMP
RATED 480VAC 2 AMP

PLOT SCALE 1=5

E	LINEAR	HOLE	ANGLES	OPEN PANEL ASSEMBLY, MCC VERSION			
	0.X = ±.050	PUNCH ±.002	DIMEN. ± 1'	LX-450 100 AMP			
	0.XX = ±.020	±.50	UNDIM.	OUTLINE DRAWING			
	0.XXX = ±.005	±.25	90° ±2'				
C	CADD NO. 46AE0101						
B	R.M.S.			DATE 07/16/01	DR.RR	CK.	REF.
A	Hubbell Industrial Controls, Inc. 50 Edwards Street Madison, Oh. 44057			DRG. NO.	1 OF 1 C-46AE0101		
Rev	DATE	BY	DESCRIPTION				

DIMENSIONS IN INCHES

C-46AE0101