

LX-301 CONTROL MODULE
SHIPPED SEPARATELY

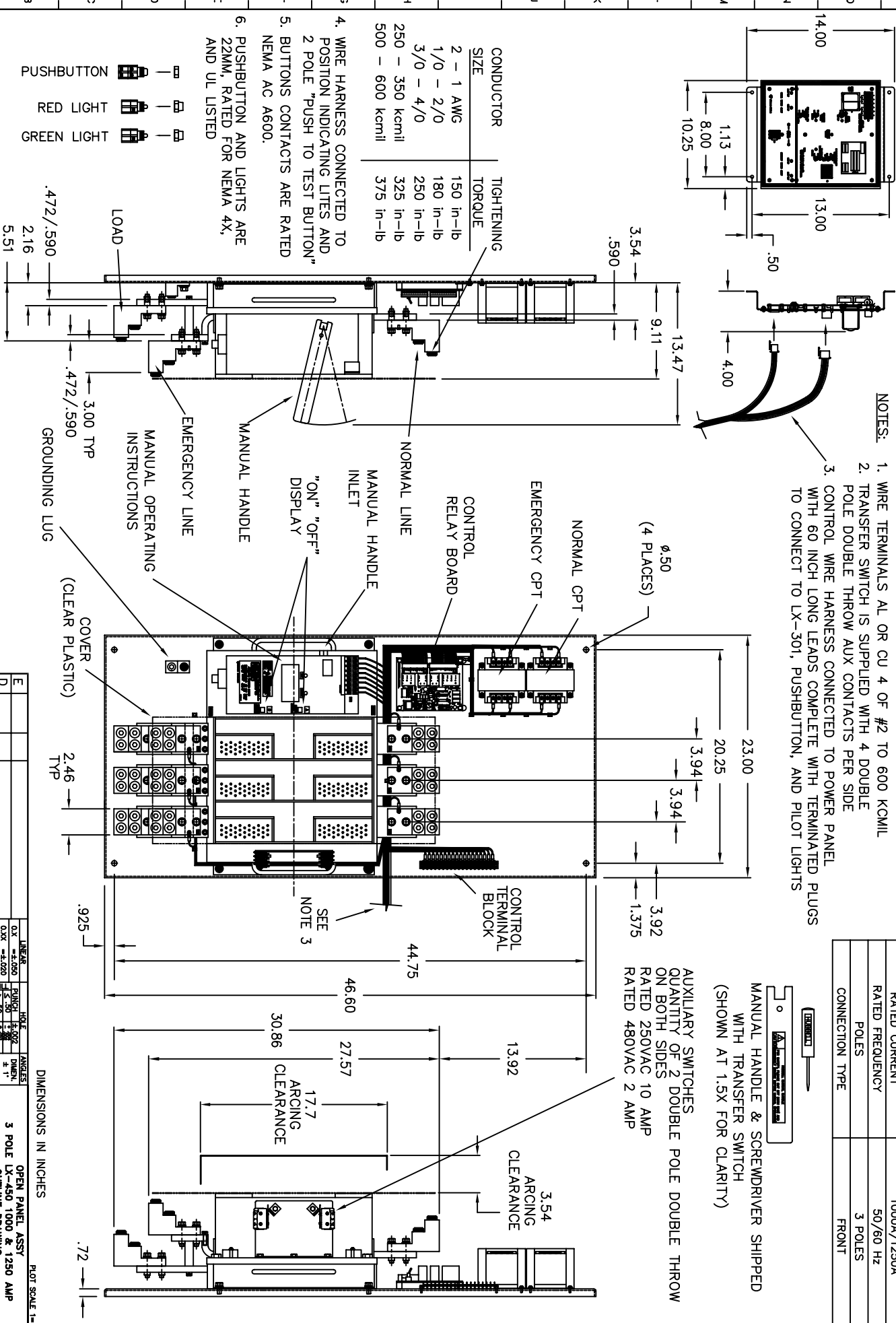
TRANSFER SWITCH 1000 & 1250 AMP 3 POLE OPEN PANEL

MAXIMUM RATINGS SPECIFICATIONS	
RATED VOLTAGE	480V AC
RATED CURRENT	1000A/1250A
RATED FREQUENCY	50/60 HZ
POLES	3 POLES
CONNECTION TYPE	FRONT

- NOTES:
1. WIRE TERMINALS AL OR CU 4 OF #2 TO 600 KCMIL
 2. TRANSFER SWITCH IS SUPPLIED WITH 4 DOUBLE POLE DOUBLE THROW AUX CONTACTS PER SIDE
 3. CONTROL WIRE HARNESS CONNECTED TO POWER PANEL WITH 60 INCH LONG LEADS COMPLETE WITH TERMINATED PLUGS TO CONNECT TO LX-301, PUSHBUTTON, AND PILOT LIGHTS

MANUAL HANDLE & SCREWDRIIVER SHIPPED WITH TRANSFER SWITCH (SHOWN AT 1.5X FOR CLARITY)

AUXILIARY SWITCHES QUANTITY OF 2 DOUBLE POLE DOUBLE THROW ON BOTH SIDES RATED 250VAC 10 AMP RATED 480VAC 2 AMP



CONDUCTOR SIZE	TIGHTENING TORQUE
2 - 1 AWG	150 in-lb
1/0 - 2/0	180 in-lb
3/0 - 4/0	250 in-lb
250 - 350 kcmil	325 in-lb
500 - 600 kcmil	375 in-lb

4. WIRE HARNESS CONNECTED TO POSITION INDICATING LITES AND 2 POLE "PUSH TO TEST BUTTON"
5. BUTTONS CONTACTS ARE RATED NEMA AC 8600.
6. PUSHBUTTON AND LIGHTS ARE 22MM, RATED FOR NEMA 4X, AND UL LISTED

- PUSHBUTTON
- RED LIGHT
- GREEN LIGHT

LOAD

EMERGENCY LINE

MANUAL OPERATING INSTRUCTIONS

MANUAL HANDLE

EMERGENCY CPT

NORMAL CPT

CONTROL RELAY BOARD

MANUAL HANDLE INLET

"ON" "OFF" DISPLAY

COVER (CLEAR PLASTIC)

GROUNDING LUG

CONTROL TERMINAL BLOCK

SEE NOTE 3

ARCING CLEARANCE

14.00

13.00

10.25

8.00

1.13

13.47

9.11

3.54

.590

4.00

23.00

20.25

3.94

3.94

3.92

1.375

2.46 TYP

2.16

.472/.590

5.51

3.00 TYP

4.72/.590

23.00

20.25

3.94

3.94

3.92

1.375

44.75

46.60

30.86

27.57

13.92

3.54

ARCING CLEARANCE

17.7

ARCING CLEARANCE

.72

CONDUCTOR SIZE
 TIGHTENING TORQUE |

EMERGENCY CPT

NORMAL CPT

CONTROL RELAY BOARD

MANUAL HANDLE INLET

"ON" "OFF" DISPLAY

COVER (CLEAR PLASTIC)

GROUNDING LUG

CONTROL TERMINAL BLOCK

SEE NOTE 3

ARCING CLEARANCE

EMERGENCY CPT

NORMAL CPT

CONTROL RELAY BOARD

MANUAL HANDLE INLET

"ON" "OFF" DISPLAY

COVER (CLEAR PLASTIC)

GROUNDING LUG

CONTROL TERMINAL BLOCK

SEE NOTE 3

ARCING CLEARANCE

EMERGENCY CPT

NORMAL CPT

CONTROL RELAY BOARD

MANUAL HANDLE INLET

"ON" "OFF" DISPLAY

COVER (CLEAR PLASTIC)

GROUNDING LUG

CONTROL TERMINAL BLOCK

SEE NOTE 3

ARCING CLEARANCE

EMERGENCY CPT

NORMAL CPT

CONTROL RELAY BOARD

MANUAL HANDLE INLET

"ON" "OFF" DISPLAY

COVER (CLEAR PLASTIC)

GROUNDING LUG

CONTROL TERMINAL BLOCK

SEE NOTE 3

ARCING CLEARANCE

EMERGENCY CPT

NORMAL CPT

CONTROL RELAY BOARD

MANUAL HANDLE INLET

"ON" "OFF" DISPLAY

COVER (CLEAR PLASTIC)

GROUNDING LUG

CONTROL TERMINAL BLOCK

SEE NOTE 3

ARCING CLEARANCE

Rev	DATE	BY	DESCRIPTION
A			
B			
C			
D			
E			

LINEAR	ANGLE	UNITS	UNITS
0.X	±.050	FRACTION	INCHES
0.0XX	±.020	FRACTION	INCHES
0.00XX	±.005	DECIMAL	INCHES
90° ±2'		DEGREE	MINUTES

DATE 10/12/01 DR. LHM

DRG. NO. C-46AE1-001

1 OF 1

REF.

3 POLE LX-450 1000 & 1250 AMP OUTLINE DRAWING

OPEN PANEL ASSY

PLAT SCALE 1=8

Industrial Industrial Controls, Inc.
50 Edwards Street Madison, ON, Canada N4C 5G7