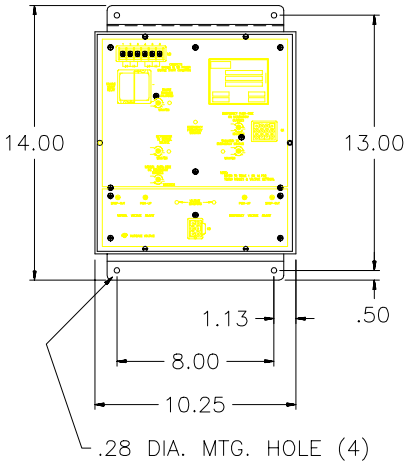


LX-301 CONTROL MODULE
SHIPPED SEPARATELY



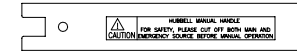
TRANSFER SWITCH 200 AMP 3 POLE OPEN PANEL
WITH OR WITHOUT TIME DELAY NEUTRAL

NOTES:

1. WIRE TERMINALS AL OR CU #6 TO 250 KCMIL
2. TRANSFER SWITCH IS SUPPLIED WITH 4 DOUBLE POLE DOUBLE THROW AUX CONTACTS PER SIDE
3. WIRE HARNESS CONNECTED TO CONTROL POWER TERMINAL BLOCKS IS 24 INCHES LONG AND TERMINATED WITH PLUGS TO CONNECT TO LX-301 CONTROL MODULE SHIPPED SEPARATELY.

MAXIMUM RATINGS SPECIFICATIONS

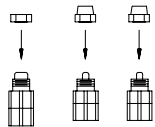
RATED VOLTAGE	480V AC
RATED CURRENT	200A
RATED FREQUENCY	50/60 Hz
POLES	3 POLES
CONNECTION TYPE	FRONT



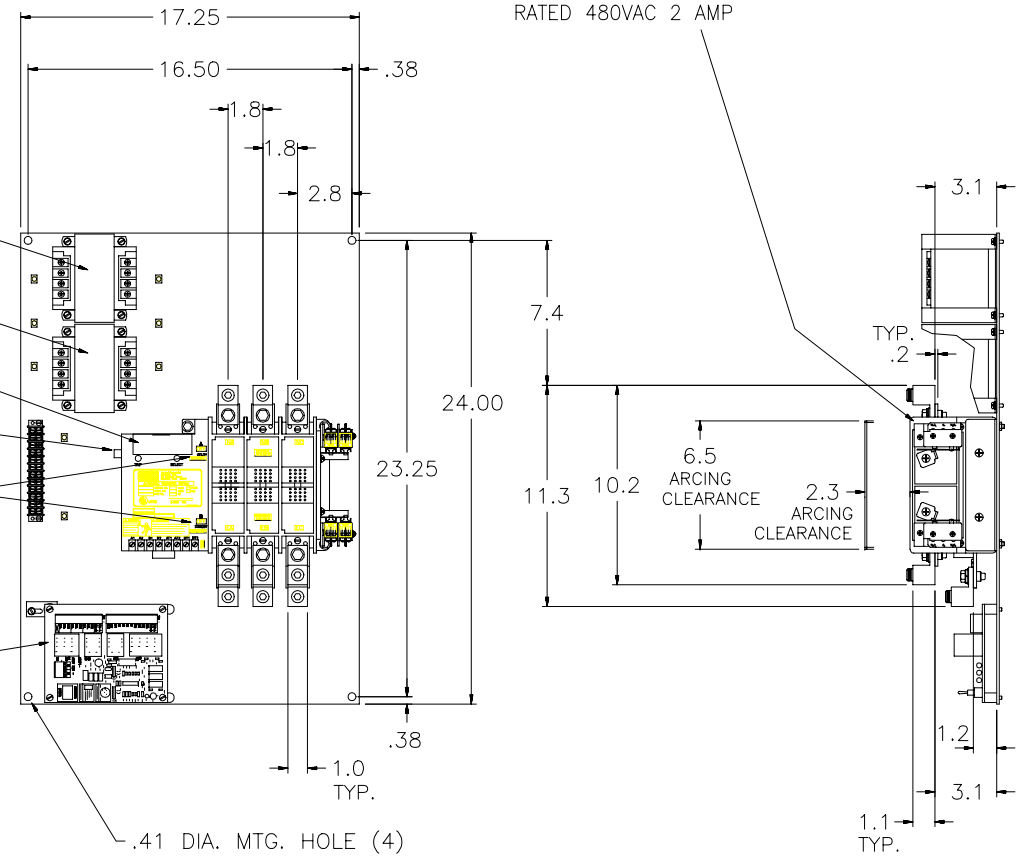
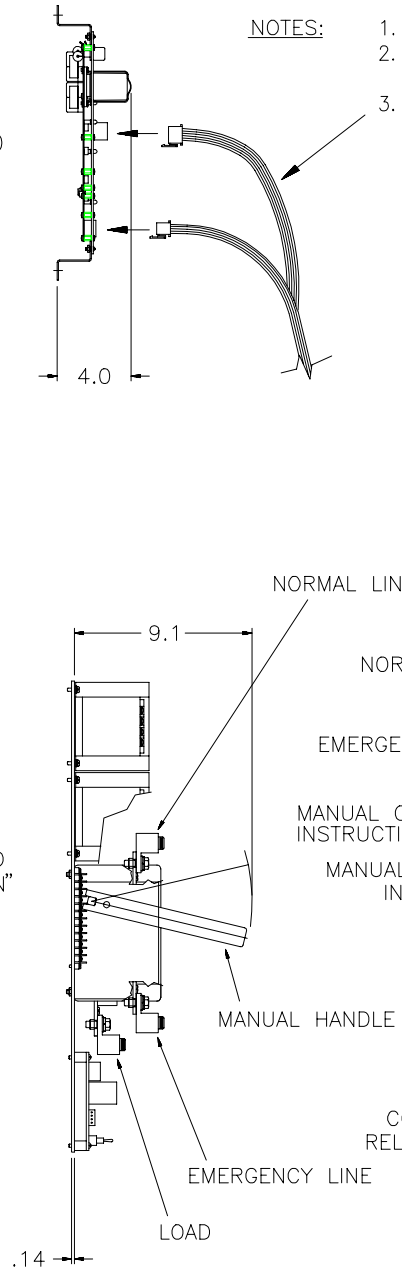
MANUAL HANDLE SHIPPED WITH TRANSFER SWITCH
(SHOWN AT 1.5X FOR CLARITY)

CONDUCTOR SIZE	TIGHTENING TORQUE
6 - 4 AWG	110 in-lb
2 - 1 AWG	150 in-lb
1/0 - 2/0 AWG	180 in-lb
3/0 - 4/0 AWG	250 in-lb
250 kcmil	325 in-lb

4. WIRE HARNESS CONNECTED TO POSITION INDICATING LIGHTS AND 2 POLE "PUSH TO TEST BUTTON"
5. BUTTONS CONTACTS ARE RATED NEMA AC A600.
6. PUSHBUTTON AND LIGHTS ARE 22MM, RATED FOR NEMA 4X, AND UL LISTED



PUSHBUTTON
RED LIGHT
GREEN LIGHT



AUXILIARY SWITCHES
QUANTITY OF 2 DOUBLE POLE DOUBLE THROW
ON BOTH SIDES
RATED 250VAC 10 AMP
RATED 480VAC 2 AMP

PLOT SCALE 1=5

LINEAR	HOLE	ANGLES	OPEN PANEL ASSEMBLY, MCC VERSION			
0.X = ±.050	PUNCH ±.002	DIMEN. ± 1'	LX-450 200 AMP			
0.XX = ±.020	±.50 ±.002	UNDIM. 90° ±2'	OUTLINE DRAWING			
0.XXX = ±.005	REAM SPECIFIED					
CADD NO. 46AE0201						
R.M.S.	DATE 07/16/01	DR.RR	CK.	REF.		
Rev	DATE	BY	DESCRIPTION	Hubbell Industrial Controls, Inc. 50 Edwards Street Madison, Oh. 44057		
				DRG. NO.	1 OF 1 C-46AE0201	

DIMENSIONS IN INCHES

C-46AE0201