

BULLETIN 5110 AC POWER, DC OPERATED
BULLETIN 5210 DC POWER, DC OPERATED

NOTE: WHEN ORDERING PARTS, FURNISH THE FOLLOWING INFORMATION
1. BULLETIN NUMBER, NEMA SIZE & SERIAL NUMBER
FROM NAMEPLATE
2. PART NUMBER & DESCRIPTION

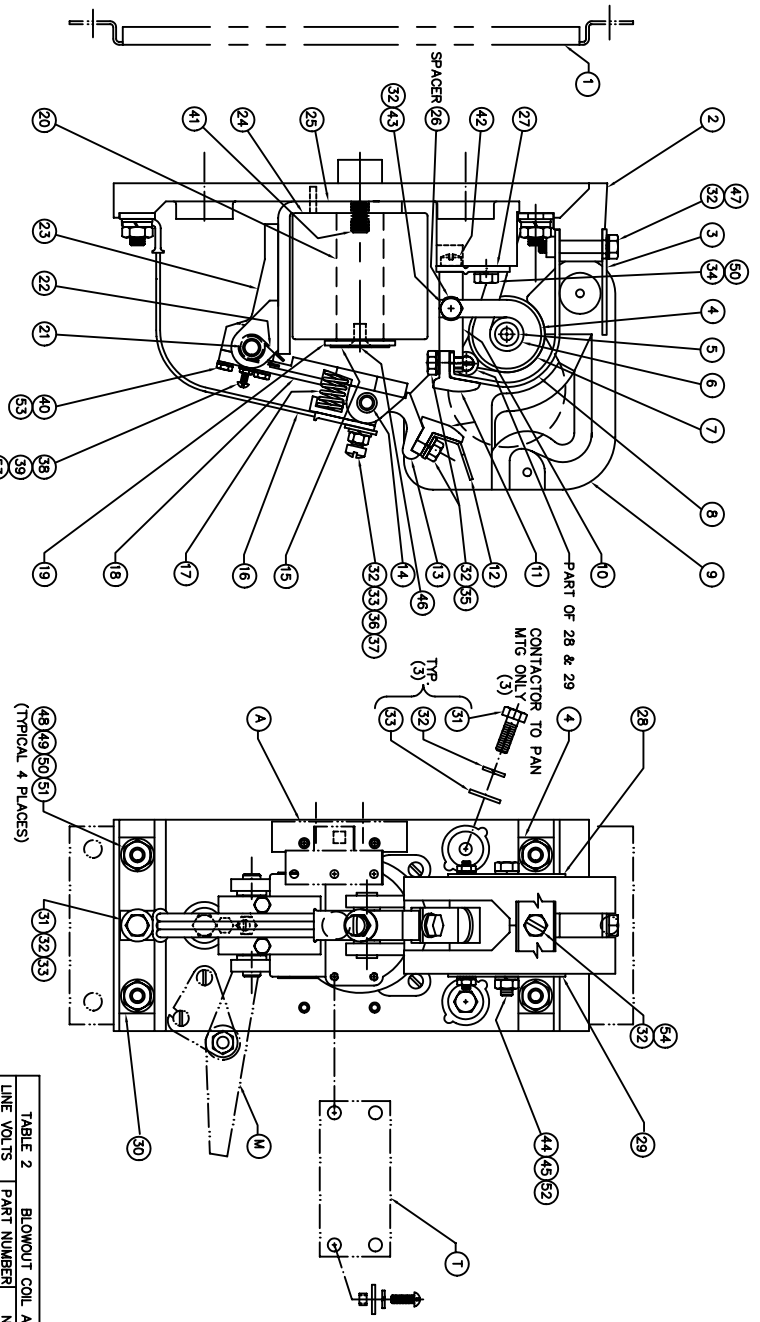


TABLE 2 BLOWOUT COIL ASSEMBLY

LINE VOLTS	PART NUMBER	NOTES
125-250	67998-006	STANDARD
550-575	67998-008	SPECIAL
125-250	67998-012	WELDED (2)

TABLE 1 OPERATING COIL

VOLTS	PART NUMBER	OHMS	COLD
230/250	17359-000	1500	
115/125	17487-000	375	
57.5	17488-000	95	
185	18907-000	1225	
75	19912-000	165	
48	19901-000	76	
36	19905-000	46	
30	19913-000	30	
24	19903-000	19	
18	20000-000	11.5	
12	17489-000	4.8	
8	67892-000	1.7	

ITEM	DESCRIPTION	NOTES	QTY PER HOLE	PART NO
1	MOUNTING PAN	(1)	1	68005-001
2	BASE		1	67995-002
3	ARC SHIELD RETAINER		1	59653-100
4	BLOWOUT COIL ASSEMBLY	(2)	1	SEE TABLE 2
5	DC BLOWOUT CORE (SOLID)	(5)	1	66970-034
6	AC BLOWOUT CORE (SLOTTED)	(5)	1	17349-000
7	BLOWOUT INSULATING TUBE		1	17351-000
8	BLOWOUT INSULATING WASHER		2	16961-000
9	BLOWOUT GUARD		1	68054-002
10	ARC SHIELD ASSEMBLY	(2)	1	16993-000
11	STATIONARY CONTACT SUPPORT	(2)	1	59665-002
12	CONTACT TIP (COPPER)	(5)	2	17279-000
13	CONTACT TIP (SILVER FACED)	(5)	2	17279-001
14	ARC TRANSFER TIP		1	68056-001
15	MOVING CONTACT HOLDER		1	59439-001
16	CONTACT HINGE PIN		1	16966-000
17	NON-MAGNETIC SPACER		1	19883-001
18	SPACER		1	65000-002
19	CONTACT SPRING		1	17356-000
20	AMATURE ASSEMBLY	(3)	1	59433-000
21	COIL CORE		1	16940-000
22	ARMATURE PIN		1	59664-001
23	ARMATURE SPRING		1	59843-000
24	ARMATURE STOP		1	59437-000
25	OPERATING COIL		1	59438-001
26	STATOR ASSEMBLY	(3)	1	SEE TABLE 1
27	SPACER-BLOWOUT COIL	(2)	1	16971-000
28	SUPPORT MOUNTING BRACKET		1	67999-000
29	FLUX PLATE ASSEMBLY-LEFT HAND	(4)	1	16985-000
30	FLUX PLATE ASSEMBLY-RIGHT HAND	(4)	1	16964-000
31	LOWER CONNECTING BUSS		1	67997-002
32	SCREW 1/4-20 X 3/4 HEX HEAD		4	47248-064
33	LOCKWASHER 1/4" SPLIT		10	47252-038
34	WASHER 1/4" FLAT STEEL		5	47250-502
35	SCREW 5/16-18 X 5/8 HEX HEAD		1	47246-078
36	SCREW 1/4-20 X 5/8 HEX HD SS		2	47246-063
37	NUT 1/4-20 STEEL		1	47253-021
38	SCREW 1/4-20 X 1/8 SL. FL. HD		1	47244-149
39	SCREW #10-24 X 5/8 RND HD		1	47241-127
40	NUT #10-24 STEEL		1	47253-016
41	SCREW #10-24 X 3/4 HEX HD		3	47246-047
42	STUD 3/8-16 X 1-5/8 LG		1	66475-014
43	SCREW 5/16-18 X 1/2 FL. H. CAP. SC.		1	49824-304
44	SCREW 1/4-20 X 1.14 HD. ST. STL.		1	47279-066
45	SCREW 1/4-20 X 2.3/4 HEX HD		1	47246-094
46	LOCKWASHER 1/4" EXTERNAL TOOTH		2	47203-008
47	SCREW 1/4-20 X 1/2 FL. HD BRASS		1	47246-089
48	SCREW 5/16-18 X 1/2 HEX HD		4	47246-079
49	WASHER 5/16 FLAT STEEL		4	47250-505
50	LOCKWASHER 5/16 SPLIT		5	47252-039
51	NUT 5/16-18 HEX STEEL		4	47253-602
52	NUT 1/4-20 HEX STEEL		4	47253-601
53	LOCK WASHER #10 HEAVY SPLIT		4	47252-065
54	SCREW 1/4-20 X 1/2 HEX HD SLOTTED		1	47245-061

ACCESSORIES

MUST BE ORDERED SEPARATELY - NOT FURNISHED WITH COMPLETE CONTACTOR

A	M	T
AUXILIARY CONTACTS	MECHANICAL INTERLOCK KIT	THE BAR KIT
SINGLE (1 N.O. & 1 N.C.) PART NO. 68001-001 DOUBLE (2 N.O. & 1 N.C.) PART NO. 68001-002	PART NO. 68041-008 SIZE 3 & 4 ADJUSTABLE INTERLOCK ASSEMBLY FOR STANDARD 5" CONTACTOR SPACING	PART NO. 59400-004 FOR STANDARD 5" CONTACTOR SPACING (NOT MANUAL-MAGNETIC DISCONNECT)
INCLUDES OPERATING STRIKER & MTG. HARDWARE REPAIR PARTS ON B-68001 PG. 1.	REPAIR PARTS ON A-58871	REPAIR PARTS ON A-59400 PG. 1

NOTES

- COMPLETE CONTACTOR AVAILABLE WITHOUT MOUNTING PAN, TWO-POLE UNIT
- ITEM 4 (TABLE 2) STANDARD, INCLUDES A WELDED TERMINAL BUSS SPECIAL WELDED BLOWOUT INCLUDES ITEMS 4, 10, 26 & 43, 32.
- INCLUDES HINGE BEARINGS
- INCLUDES SUPPORT BOSS
- SELECT ONE ITEM ONLY (QUANTITIES AS SHOWN)

REV	DATE	BY	DESCRIPTION	REV	DATE	BY	DESCRIPTION
A				B	11/14/85	RWL	REWORK & REV PER ECM 5210-272
F				A			AUX #68011 WAS 68040

LINEAR **ANGLE**
 DIM. DIMEN.
 0.005 ± 0.001 0.002 ± 0.001
 0.005 ± 0.001 0.002 ± 0.001
 CADD NO. 59440100 90 527
 R.M.S. DATE 12/08/95 DR. FB/JLM OK. REF.
Industrial Industrial Controls, Inc. DRG. NO. **RPC-59440-1**
 50 Edwards Street, Madison, NC 27037 1 OF 1