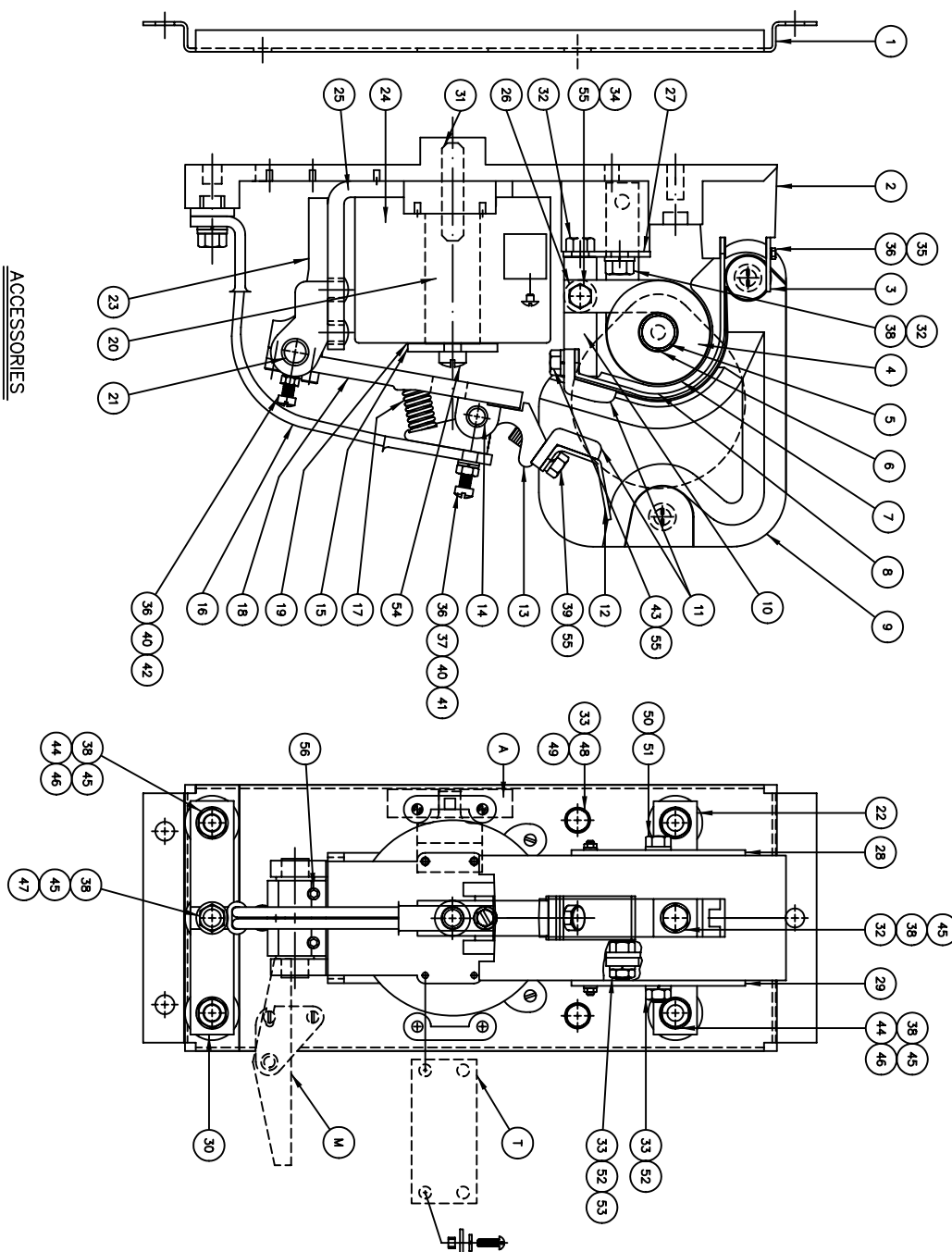


BULL 5210 AC POWER, DC OPERATED  
 BULL 5210 DC POWER, DC OPERATED  
 NOTE: WHEN ORDERING PARTS, FURNISH THE FOLLOWING INFORMATION:  
 1. BULLETIN NUMBER, NEMA SIZE, & SERIAL NUMBER FROM NAMEPLATE  
 2. PART NUMBER & DESCRIPTION



ITEM	DESCRIPTION	NOTES	PART NO.	QTY.
1	MOUNTING PANI	(1)	68038-000	1
2	BASE		68022-001	1
3	ARC SHIELD RETAINER		59653-100	1
4	BLOWOUT COIL		41171-001	1
5	D.C. BLOWOUT CORE (SOLID)		66870-035	1
5	A.C. BLOWOUT CORE (SLOTTED)		18599-000	1
6	BLOWOUT INSULATING TUBE		18601-000	1
7	BLOWOUT INSULATING WASHER		18603-000	2
8	BLOWOUT GUARD		68030-000	1
9	ARC SHIELD ASSEMBLY		18063-000	1
10	STATIONARY CONTACT SUPPORT		58718-000	1
11	CONTACT TIP (COPPER)		18402-000	2
11	CONTACT TIP (SILVER FACED)		18402-001	2
12	CONTACT TIP (SILVER TUNGSTEN CARBIDE FACED)		18402-004	2
13	ARC TRANSFER TIP		59465-000	1
13	MOVING CONTACT HOLDER		59445-001	1
14	CONTACT HINGE PIN		59462-000	1
15	CORE CAP		19657-000	1
16	SHUNT		68027-002	1
17	CONTACT SPRING		67981-014	1
18	ARMATURE ASSEMBLY	(2)	59454-001	1
19	NON MAGNETIC SPACER		59545-000	1
20	COIL CORE		58720-001	1
21	ARMATURE HINGE PIN		59463-000	1
22	UPPER TERMINAL ASSEMBLY		68026-000	1
23	ARMATURE STOP		59457-001	1
24	OPERATING COIL	(2)	SEE TABLE 1	1
25	STATOR ASSEMBLY		59449-000	1
26	SPACER - BLOWOUT COIL		66870-031	1
27	SUPPORT MOUNTING BRACKET		68023-000	1
28	FLUX PLATE ASSEMBLY - LEFT HAND	(3)	18061-000	1
29	FLUX PLATE ASSEMBLY - RIGHT HAND	(3)	18062-000	1
30	LOWER CONNECTING BUS		68024-000	1
31	.500-13 X 1.93 STUD		66475-021	1
32	.375-16 X .75 HEX HEAD SCREW		47246-102	3
33	.312 SPLIT LOCKWASHER		47252-039	3
34	.312-18 X 1.50 STAINLESS STEEL SCREW		47779-083	1
35	.250-20 X 1.50 HEX HEAD SCREW		47246-069	1
36	.250 SPLIT LOCKWASHER		47252-038	3
37	.250 FLAT WASHER		47250-511	1
38	.375 SPLIT LOCKWASHER		47252-040	6
39	.312-18 X 1.00 S.S. HEX HD SCREW		47779-081	1
40	.250-20 HEX NUT		47253-021	2
41	.250-20 X 1.90 SLOTTED HEAD FLUSTER SCREW		47244-155	1
42	.250-20 X .87 SLOTTED HEAD FLUSTER SCREW		47244-149	4
43	.312-18 X .75 S.S. HEX HD SCREW		47779-079	1
44	.375-16 X 1.25 HEX HEAD SCREW		47246-104	4
45	.375 WASHER		47250-020	6
46	.375-16 NUT		47253-503	4
47	.375-16 X 1 HEX HEAD SCREW		47246-103	1
48	.312-18 X 1.00 HEX HEAD SCREW		47246-081	3
49	.312 WASHER		47250-505	3
50	.312-18 X 3.50 HEX HEAD SCREW		47246-101	1
51	.312 INTERNAL TOOTH LOCK WASHER		47254-010	1
52	.312-18 NUT		47253-602	2
53	.312-18 X .75 HEX HEAD SCREW		47246-079	1
54	.375-16 X .75 SLOTTED FLUSTER HEAD SCR		48624-334	1
55	.312 S.S. SPLIT LOCK WASHER		47252-339	3

ACCESSORIES

MUST BE ORDERED SEPARATELY - NOT FURNISHED WITH COMPLETE CONTACTOR

A	M	T
AUXILIARY CONTACTS	MECHANICAL INTERLOCK KIT	THE BAR KIT
SINGLE (1 N.O. & 1 N.C.) PART NO. 68011-008	PART NO. 68041-009 FOR STANDARD 6,825° CONTACTOR SPACING	PART NO. 59400-005 FOR STANDARD 6,625° CONTACTOR SPACING (NOT MANUAL-MAGNETIC DISCONNECT)
DOUBLE (2 N.O. & 1 N.C.) PART NO. 68011-009	REPAIR PARTS ON A-58671	REPAIR PARTS ON A-59400 PG. 1
INCLUDES OPERATING STRIKER & MTG. HARDWARE		
REPAIR PARTS ON B-68011 PG. 1.		

NOTES

- (1) COMPLETE CONTACTOR AVAILABLE WITHOUT MOUNTING PANI.
- (2) INCLUDES HINGE BEARINGS
- (3) INCLUDES SUPPORT BOSS

TABLE 1 OPERATING COIL

VOLTS	PART NUMBER	OHMS COIL
275	67890-001	1080
230/250	67890-002	900
115/125	67890-003	225
75	67890-004	82
57.5	67890-005	49
24	67890-006	8.6
36	67890-007	19
12	67890-008	2.22

56	250-20 X .87 LG. SOCKET HEAD SCREW	47100-075	3
----	------------------------------------	-----------	---

LINE/REV	DATE	BY	DESCRIPTION
K			
J			
I			
H			
G			
F	5-24-00	KR	AUX #68011 WAS 68040

REPAIR PARTS BULL. 5210 & 5210  
 NEMA SIZE 5A, 400 AMP CONTACTOR  
 MOLDED BASE & CAST ARMATURE

Hubbell Industrial Controls, Inc. DRG. NO. RPC-59451-1  
 50 Edwards Street Madison, Conn. 04405

DATE 3-3-87 DR. FB/JLM OK. REF.