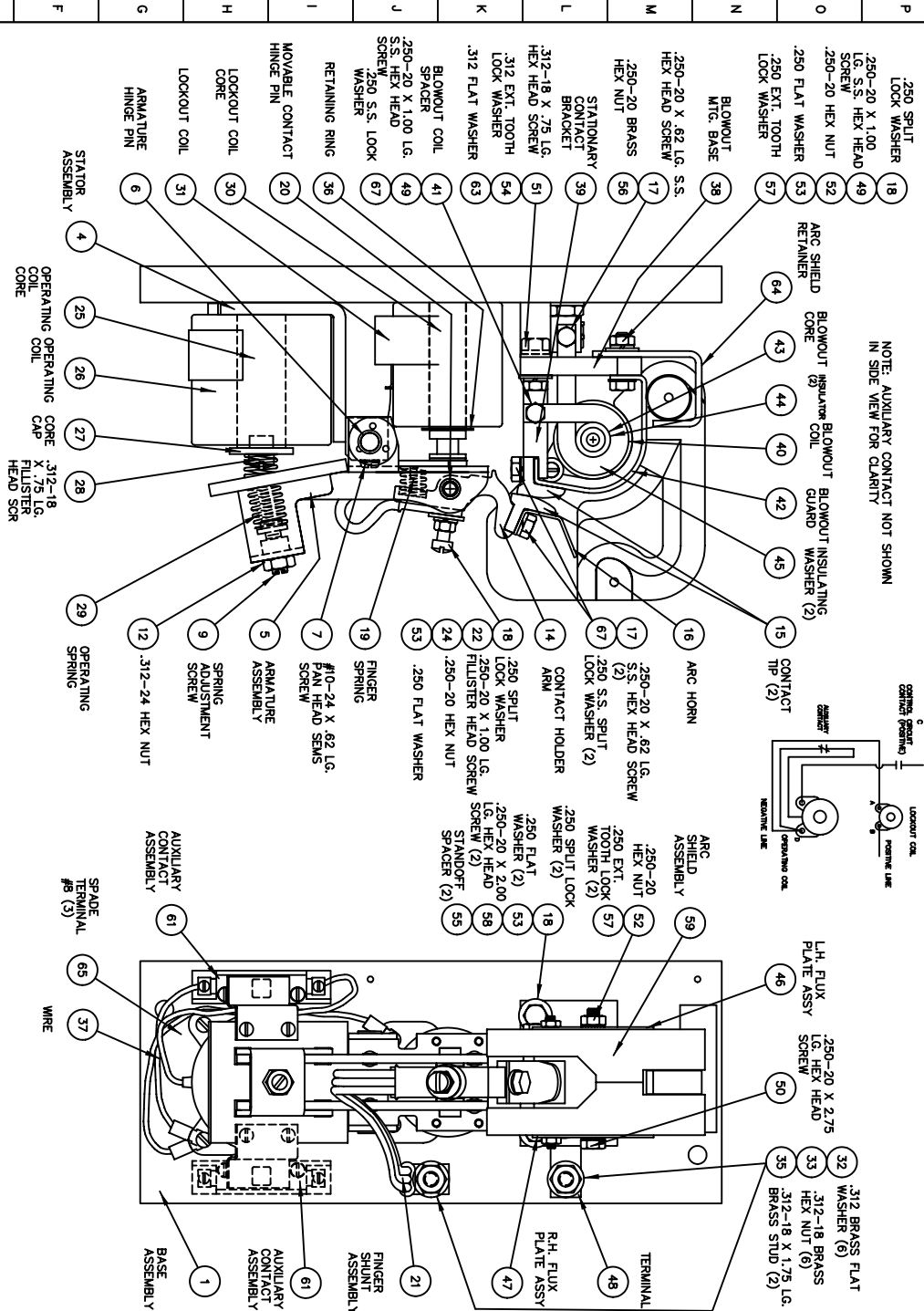


NOTE: WHEN ORDERING REPAIR PARTS BE SURE TO FURNISH SERIAL NUMBER & PART NUMBER WHICH ARE LOCATED ON NAME PLATE. ALSO PART NAME & PART NUMBER.

ITEM	DESCRIPTION	PART NO.	QTY.
1	BASE ASSEMBLY	58868-002	1
2			
3			
4	STATOR ASSEMBLY	19795-000	1
5	ARMATURE ASSEMBLY	19797-002	1
6	ARMATURE HINGE PIN	58843-001	1
7	#10-24 X .62 LG. PAN HEAD SEMS SCREW	49137-076	1
8			
9	SPRING ADJUSTMENT SCREW	42899-000	1
10			
11			
12	.312-24 HEX NUT	47253-204	1
13			
14	CONTACT HOLDER ARM	16927-000	1
15	CONTACT TIP	17279-000	2
16	ARC HORN	68056-001	1
17	.250-20 X .62 LG. S.S. HEX HEAD SCREW	47279-063	3
18	.250 SPLIT LOCK WASHER	47292-038	4
19	FINGER SPRING	16960-000	1
20	MOVABLE CONTACT HINGE PIN	16968-000	1
21	FINGER SHUNT ASSEMBLY	17408-000	1
22	.250-20 X 1.00 LG. FILLISTER HEAD SCREW	47244-150	1
23			
24	.250-20 HEX NUT	47253-021	1
25	OPERATING COIL CORE	58672-001	1
26	OPERATING COIL	68091-001	1
27	OPERATING CORE CAP	42840-000	1
28	.312-18 X .75 LG. FILLISTER HEAD SCREW	48624-307	1
29	OPERATING SPRING	19257-000	1
30	LOCKOUT COIL CORE	57658-004	1
31	LOCKOUT COIL	58859-001	1
32	.312 BRASS FLAT WASHER	47251-012	6
33	.312-18 BRASS HEX NUT	47254-013	6
34			
35	.312-18 X 1.75 LG. BRASS STUD	57438-042	2
36	RETAINING RING	57429-024	1
37	14 GA. CL-1251 WIRE 40.8 LONG	821-14-08-14	1
38	BLOWOUT COIL MOUNTING BASE	58667-001	1
39	STATIONARY CONTACT BRACKET	58665-002	1
40	BLOWOUT COIL SPACER	58860-002	1
41	BLOWOUT COIL	16971-000	1
42	BLOWOUT GUARD	66870-034	1
43	BLOWOUT CORE INSULATOR	17351-000	1
44	BLOWOUT COIL INSULATING WASHER	16961-000	2
45	L.H. FLUX PLATE ASSEMBLY	16965-000	1
46	R.H. FLUX PLATE ASSEMBLY	16964-000	1
47	TERMINAL	58861-001	1
48			
49	.250-20 X 1.00 LG. S.S. HEX HEAD SCREW	47279-066	2
50	.250-20 X 2.75 LG. HEX HEAD SCREW	47246-094	1
51	.312-18 X .75 LG. HEX HEAD SCREW	47246-079	1
52	.250-20 HEX NUT	47253-001	2
53	.250 FLAT WASHER	47250-502	4
54	.312 INTERNAL TOOTH LOCK WASHER	47304-010	1
55	STANDOFF SPACER	57690-000	2
56	.250-20 BRASS HEX NUT	47254-011	1
57	.250 EXTERNAL TOOTH LOCK WASHER	47303-008	3
58	.250-20 X 2.00 LG. HEX HEAD SCREW	47246-071	2



ITEM	DESCRIPTION	PART NO.	QTY.
59	ARC SHIELD ASSEMBLY	16993-000	1
60			
61	AUXILIARY CONTACT ASSEMBLY	68011-004	1
62			
63	.312 FLAT WASHER	47250-505	1
64	ARC SHIELD RETAINER	68323-001	1
65	SPADE TERMINAL #9	57513-066	3
66			
67	.250 S.S. SPLIT LOCK WASHER	47292-238	3

△ SINGLE L.H. AUXILIARY INCLUDED IN COMPLETE CONTRACTOR ORDER ADDITIONAL AUXILIARY'S AS FOLLOWS:
 KIT - SINGLE BLOCK P/N 68011-004
 KIT - DOUBLE BLOCK P/N 68011-005
 PARTS DRG. B-68011 SH11

REVISION	DATE	BY	DESCRIPTION
A			
B			
C			
D			
E			

RENEWAL PARTS BULLETIN 5210
 FIBERGLASS BASED 150 AMP ONE POLE
 NOMINALLY CLOSED DC CONTACTOR - SIZE 4
 ALCOA SPECIAL FOR P/N 58868-005

DATE 11-18-00 DR. T. JOHNSON/CK.
 DRG. NO. RPC-58868-5
 1 OF 1