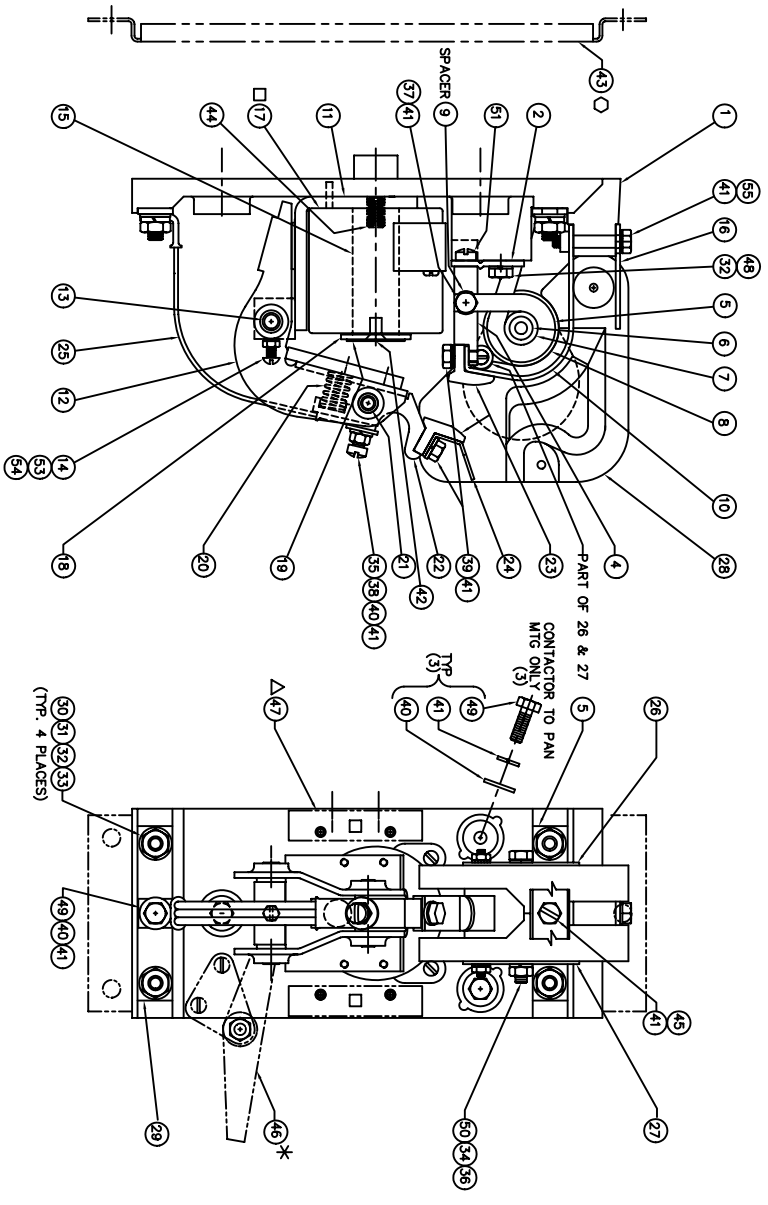


NOTE: WHEN ORDERING PARTS, FURNISH THE FOLLOWING INFORMATION
 1. BULLETIN NUMBER, NEMA SIZE, & SERIAL NUMBER
 2. PART NUMBER & DESCRIPTION

ITEM	DESCRIPTION	QTY	PART NO. SINGLE POLE
1	BASE	1	150 AMP
2	CONTACT SUPPORT BRACKET	1	67985-002
3		1	67989
4	STATIONARY CONTACT BRACKET	1	58665-002
5	BLOWOUT COIL TERMINAL ASSEMBLY - STD.	1	67988-006
6	BLOWOUT COIL ASSEMBLY - 550 VOLT	1	67988-008
7	SHOCK RESISTANT WELDED BLOWOUT ASSEMBLY	1	67989-012
8	BLOWOUT COIL CORE	1	66870-034
9	B.O. CORE INSULATOR WASHER	1	17351
10	B.O. COIL SPACER	2	16861
11	B.O. GUARD	1	68054-002
12	STATOR ASSEMBLY	1	17356
13	ARMATURE ASSEMBLY	1	17354
14	ARMATURE BEARING PIN	1	59843
15	HINGE PIN SCREW 10-24 X 5/8 LG RND HD	1	47241-127
16	STATOR CORE	1	58664-001
17	ARC SHIELD RETAINER	1	59853-100
18	OPERATING COIL - 230/250 VOLTS	1	17359
19	OPERATING COIL 115/125 VOLTS	1	17487
20	OPERATING COIL 57.5 VOLTS	1	17488
21	CORE CAP	1	16940
22	NON MAGNETIC SPACER	1	16983-001
23	CONTACT BEARING	1	16960
24	CONTACT BEARING PIN	1	16968
25	MOVABLE CONTACT HOLDER	1	16927
26	CONTACT TIP - STANDARD	2	17279-001
27	CONTACT TIP - SILVER	2	68056-001
28	ARC HORN	1	68000-002
29	SHUNT ASSEMBLY	1	16985
30	FLUX PLATE ASSEMBLY L.H.	1	16984
31	FLUX PLATE ASSEMBLY R.H.	1	16983-000
32	TERMINAL - BOTTOM	1	67987-002
33	5/16 -18 HEX NUT STEEL	4	47253-002
34	5/16 FLAT WASHER STEEL	4	47252-039
35	3/8 -18 X 3/4 HEX HD CAP SCREW STEEL	4	47246-079
36	1/4 -20 HEX NUT - JAM	1	47253-001
37	1/4 -20 HEX NUT - STEEL	1	47253-021
38	1/4 -20 X 2-3/4 HEX HD CAP SCREW	1	47246-094
39	1/4 -20 X 7/8 SL. FILLISTER HD SCREW	1	47779-066
40	1/4 -20 X 5/8 HEX HD CAP SCR. STAINLESS	2	47779-063
41	1/4 FLAT WASHER STEEL	5	47250-002
42	1/4 SPLIT LOCK WASHER	10	47252-038
43	1/4 -20 X 1/2 FLAT HD SCREW - BRASS	1	47665-010
44	MOUNTING PAN - STEEL	1	68005-001
45	3/8 -16 X 1-5/8 LG. STUD - STEEL	1	68475-014
46	1/4 -20 X 1/2 HEX HD CAP SCREW SLOTTED	1	47246-061
47	MECHANICAL INTERLOCK ASSEMBLY (KIT)	1	PER ORDER
48	AUX. ASSEM. (N.O. & N.C. CONTACTS) (KIT)	1	AS REQUIRED
49	5/16 -18 X 5/8 HEX HD CAP SCR	4	47246-078
50	1/4 -20 X 3/4 HEX HD CAP SCR	4	47246-064
51	1/4 LOCKWASHER - EXTERNAL TOOTH	2	47303-008
52	5/16 -18 X 1/2 SL. FILLISTER HD. CAP SCREW	1	48624-304
53	THE BAR KIT (FOR 2 POLE THED CONTACTORS ONLY)	1	59400-001
54	#10 LOCKWASHER - HEAVY SPLIT	1	47252-065
55	1/4 -20 X 1-1/2 HEX HD CAP SCREW	1	47246-069



ITEM	DESCRIPTION	QTY	PART NO.
1	BASE	1	150 AMP
2	CONTACT SUPPORT BRACKET	1	67985-002
3		1	67989
4	STATIONARY CONTACT BRACKET	1	58665-002
5	BLOWOUT COIL TERMINAL ASSEMBLY - STD.	1	67988-006
6	BLOWOUT COIL ASSEMBLY - 550 VOLT	1	67988-008
7	SHOCK RESISTANT WELDED BLOWOUT ASSEMBLY	1	67989-012
8	BLOWOUT COIL CORE	1	66870-034
9	B.O. CORE INSULATOR WASHER	1	17351
10	B.O. COIL SPACER	2	16861
11	B.O. GUARD	1	68054-002
12	STATOR ASSEMBLY	1	17356
13	ARMATURE ASSEMBLY	1	17354
14	ARMATURE BEARING PIN	1	59843
15	HINGE PIN SCREW 10-24 X 5/8 LG RND HD	1	47241-127
16	STATOR CORE	1	58664-001
17	ARC SHIELD RETAINER	1	59853-100
18	OPERATING COIL - 230/250 VOLTS	1	17359
19	OPERATING COIL 115/125 VOLTS	1	17487
20	OPERATING COIL 57.5 VOLTS	1	17488
21	CORE CAP	1	16940
22	NON MAGNETIC SPACER	1	16983-001
23	CONTACT BEARING	1	16960
24	CONTACT BEARING PIN	1	16968
25	MOVABLE CONTACT HOLDER	1	16927
26	CONTACT TIP - STANDARD	2	17279-001
27	CONTACT TIP - SILVER	2	68056-001
28	ARC HORN	1	68000-002
29	SHUNT ASSEMBLY	1	16985
30	FLUX PLATE ASSEMBLY L.H.	1	16984
31	FLUX PLATE ASSEMBLY R.H.	1	16983-000
32	TERMINAL - BOTTOM	1	67987-002
33	5/16 -18 HEX NUT STEEL	4	47253-002
34	5/16 FLAT WASHER STEEL	4	47252-039
35	3/8 -18 X 3/4 HEX HD CAP SCREW STEEL	4	47246-079
36	1/4 -20 HEX NUT - JAM	1	47253-001
37	1/4 -20 HEX NUT - STEEL	1	47253-021
38	1/4 -20 X 2-3/4 HEX HD CAP SCREW	1	47246-094
39	1/4 -20 X 7/8 SL. FILLISTER HD SCREW	1	47779-066
40	1/4 -20 X 5/8 HEX HD CAP SCR. STAINLESS	2	47779-063
41	1/4 FLAT WASHER STEEL	5	47250-002
42	1/4 SPLIT LOCK WASHER	10	47252-038
43	1/4 -20 X 1/2 FLAT HD SCREW - BRASS	1	47665-010
44	MOUNTING PAN - STEEL	1	68005-001
45	3/8 -16 X 1-5/8 LG. STUD - STEEL	1	68475-014
46	1/4 -20 X 1/2 HEX HD CAP SCREW SLOTTED	1	47246-061
47	MECHANICAL INTERLOCK ASSEMBLY (KIT)	1	PER ORDER
48	AUX. ASSEM. (N.O. & N.C. CONTACTS) (KIT)	1	AS REQUIRED
49	5/16 -18 X 5/8 HEX HD CAP SCR	4	47246-078
50	1/4 -20 X 3/4 HEX HD CAP SCR	4	47246-064
51	1/4 LOCKWASHER - EXTERNAL TOOTH	2	47303-008
52	5/16 -18 X 1/2 SL. FILLISTER HD. CAP SCREW	1	48624-304
53	THE BAR KIT (FOR 2 POLE THED CONTACTORS ONLY)	1	59400-001
54	#10 LOCKWASHER - HEAVY SPLIT	1	47252-065
55	1/4 -20 X 1-1/2 HEX HD CAP SCREW	1	47246-069

▲ AUXILIARY CONTROL CONTACT ASSEMBLY (INCLUDING KNOCKER)
 P/N 68011-001 SINGLE BLOCK UNIT P/N 68011-002 DOUBLE
 BLOCK UNIT. TO BE ORDERED SEPARATELY.
 ▲ AUXILIARY CONTROL CONTACT ASSEMBLY IS NOT INCLUDED
 IN COMPLETE CONTACTOR ASSEMBLY.
 □ SELECT ONE ITEM ONLY
 (QUANTITIES AS SHOWN)
 * INTERLOCK BAR ASSEMBLY P/N 68041-003 TO BE
 ORDERED SEPARATELY. REFER TO REPAIR PARTS PRINT A-58671
 INTERLOCK BAR ASSEMBLY IS NOT INCLUDED WITH
 COMPLETE CONTACTOR ASSEMBLY.
 ● WELDED BLOWOUT ASSEMBLY INCLUDES
 ITEMS 4, 5, 9, 37, & 41.

ITEM	DESCRIPTION	QTY	PART NO.
605	SHOCK RESISTANT WELDED BLOWOUT ASSEMBLY ● & SILVER FACED CONTACTS D	1	57.5
603		1	115/125
609		1	230/250
403	SHOCK RESISTANT WELDED BLOWOUT ASSEMBLY ●	1	57.5
401		1	115/125
409		1	230/250
303	SILVER FACED CONTACTS D	1	57.5
301		1	115/125
304		1	230/250
503	POWER CONTACTS	1	57.5
502		1	115/125
504		1	230/250
005	LINE VOLTAGE	1	57.5
003	550 V. DC ONLY	1	115/125
001	STANDARD	1	230/250

REV	DATE	BY	DESCRIPTION
A	11/14/85	RWJ	REPAIR PARTS FOR 5210-272
B	5-24-00	R	AUX 68011 WAS 68040
C			
D			
E			
F			
G			
H			
I			
J			

BULL. 5210 REPAIR PARTS FOR
 150 AMP (SIZE 4)
 MOLDED BASE DC CONTACTOR
 WELDED ARMATURE
 DATE: 12/08/95 DRG. NO. RPC-59345-1
 1 OF 1