

# Alternating Relay

Catalog 5247 • August 2006 • Replaces October 2006

**5247**

## Description

The Furnas Brand Class 47 alternator relay provides a means of automatically alternating the operation of two separately mounted motor driven pumps or compressors. This alternating action assures even readiness and wear on both pumps.

The Class 47 alternator is of industrial design specifically for use in pump and compressor applications. It is easily field installed and wired in control panels, pump panels or as a separately enclosed unit for surface mounting.

The alternator has single pole double throw heavy duty 10 ampere silver cadmium oxide contacts enclosed in a transparent dust cover. The snap action contacts transfer when the unit is de-energized. The circuit is never closed or opened while current is being conducted. This provides increased control life. The alternator is wired to operate the second motor starter the next time a pump operation is required.



## Features

- No Load Transfer
- Industrial Design
- Front Wired
- NEMA Rating A600
- SPDT 10 Amp Contacts
- UL Listed File #E22655
- CSA Certified File #LR6535



Contacts shown with Plastic cover removed

## Electrical Ratings

NEMA AC Ratings 50/60 Hz		
NEMA A600 10 Amps Cont.		
Volts	Make	Break
120	60	6
240	30	3
480	15	1.5

Coil Data					
Watts	Volts 60Hz	Inrush (Open Magnet)		Normal (Sealed Magnet)	
		Amps	VA	Amps	VA
4	24	4	96	0.629	15.1
	120	0.8		0.126	
	240	0.4		0.063	
	480	0.2		0.031	



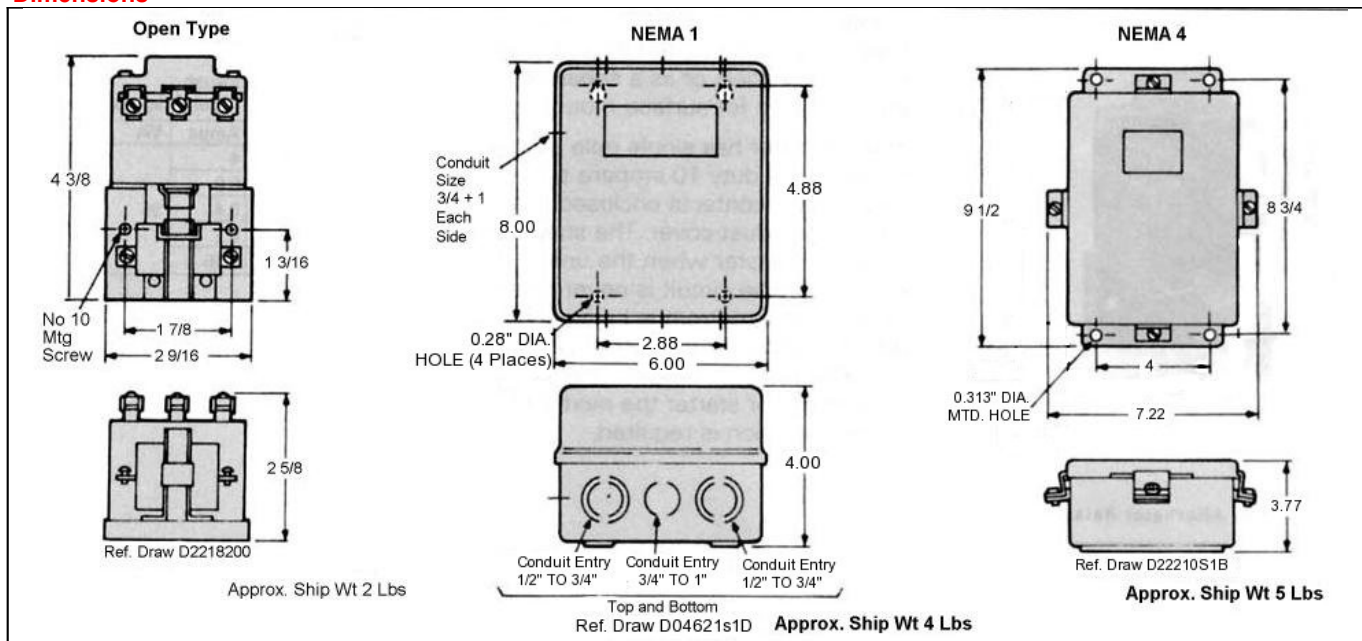
Ordering Information

Discount Code E84

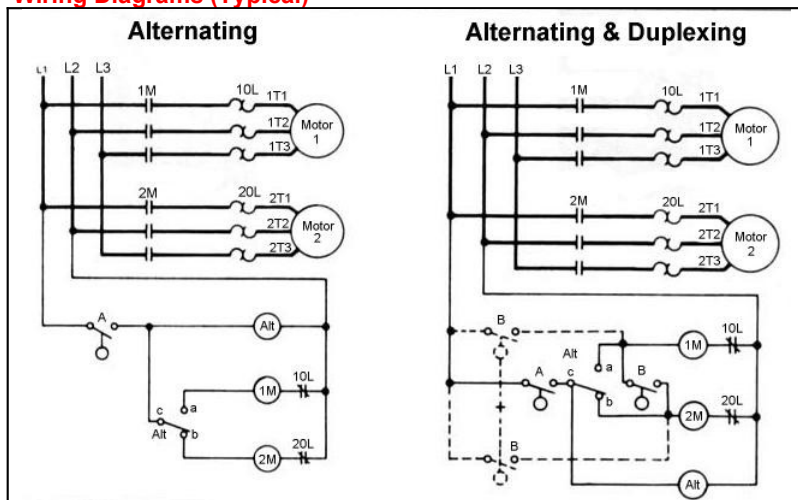
Volts 60Hz	Open Type		NEMA 1 * General Purpose		NEMA 4 * Water Tight Painted Steel	
	Catalog No.	E84 List Price	Catalog No.		Catalog No.	
24	47AB10AJ	216	47AB10BJ	343.50	47AB10EJ	433.50
120	47AB10AF	216	47AB10BF	343.50	47AB10EF	433.50
200	47AB10AD	216	47AB10BD	343.50	47AB10ED	433.50
240	47AB10AG	216	47AB10BG	343.50	47AB10EG	433.50
480	47AB10AH	216	47AB10BH	343.50	47AB10EH	433.50

\* Consult Factory for enclosed relays

Dimensions



Wiring Diagrams (Typical)



For added safety, replace the single pole float switch (B) with a 2 pole auxiliary (B') float switch (see dotted wiring). Switch (A) is set to close before switch (B).

Notes: Dimensions for reference, not for construction

Replacement Parts



Class	Volts, 60Hz	Cat. No.	E89 List Price
47	24	75D50833J	75.00
	120	75D50833F	75.00
	208	75D50833D	75.00
	240	75D50833G	75.00
	480	75D50833H	75.00

Prices subject to change without notice.



Hubbell Industrial Controls, Inc.

A subsidiary of Hubbell Incorporated

4301 Cheyenne Dr., Archdale, NC. 27263  
 Telephone (336) 434-2800 • FAX (336) 434-2803  
<http://www.hubbell-icd.com>  
[Sales@hubbell-icd.com](mailto:Sales@hubbell-icd.com)