

Alternating Relay

Catalog 5247 • April 2011, Replaces May 2010

5247

Description

The Class 47 alternator relay provides a means of automatically alternating the operation of two separately mounted motor driven pumps or compressors. This alternating action assures even readiness and wear on both pumps.

The Class 47 alternator is of industrial design specifically for use in pump and compressor applications. It is easily field installed and wired in control panels, pump panels or as a separately enclosed unit for surface mounting.

The alternator has single pole double throw heavy duty 10 ampere silver cadmium oxide contacts enclosed in a transparent dust cover. The snap action contacts transfer when the unit is de-energized. The circuit is never closed or opened while current is being conducted. This provides increased control life. The alternator is wired to operate the second motor starter the next time a pump operation is required.



Features

- No Load Transfer
- Industrial Design
- Front Wired
- NEMA Rating A600
- SPDT 10 Amp Contacts
- UL Listed File #E22655
- CSA Certified File #LR6535



Contacts shown with Plastic cover removed

Electrical Ratings

NEMA AC Ratings 50/60 Hz		
NEMA A600 10 Amps Cont.		
Volts	Make	Break
120	60	6
240	30	3
480	15	1.5

Coil Data					
Watts	Volts 60Hz	Inrush (Open Magnet)		Normal (Sealed Magnet)	
		Amps	VA	Amps	VA
4	24	4	96	0.629	15.1
	120	0.8		0.126	
	240	0.4		0.063	
	480	0.2		0.031	



Catalog 5247

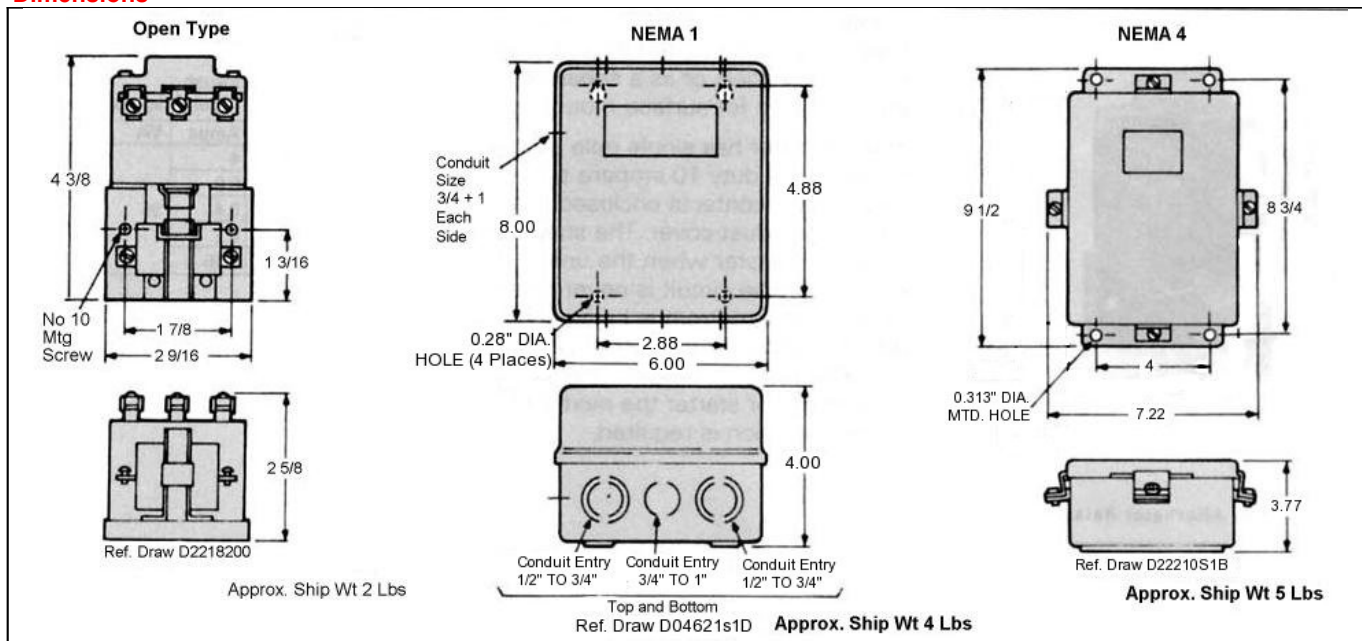
Ordering Information

Discount Code FP

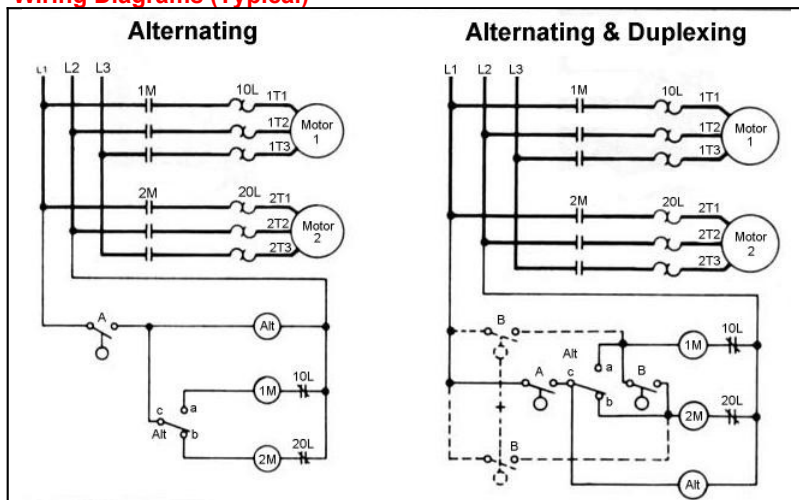
Volts 60Hz	Open Type		NEMA 1* General Purpose		NEMA 4* Water Tight Painted Steel	
	Catalog No.	List Price	Catalog No.	List Price	Catalog No.	List Price
24	47AB10AJ	\$216	47AB10BJ	\$344	47AB10EJ	\$434
120	47AB10AF	\$216	47AB10BF	\$344	47AB10EF	\$434
200	47AB10AD	\$216	47AB10BD	\$344	47AB10ED	\$434
240	47AB10AG	\$216	47AB10BG	\$344	47AB10EG	\$434
480	47AB10AH	\$216	47AB10BH	\$344	47AB10EH	\$434

* Consult Factory for enclosed relays

Dimensions



Wiring Diagrams (Typical)



For added safety, replace the single pole float switch (B) with a 2 pole auxiliary (B') float switch (see dotted wiring). Switch (A) is set to close before switch (B).

Notes: Dimensions for reference, not for construction

Replacement Parts



Class	Volts, 60Hz	Cat. No.	Sch. FP List Price
47	24	75D50833J	\$75
	120	75D50833F	\$75
	208	75D50833D	\$75
	240	75D50833G	\$75
	480	75D50833H	\$75

Prices subject to change without notice.



Hubbell Industrial Controls, Inc.

A subsidiary of Hubbell Incorporated

4301 Cheyenne Dr., Archdale, NC. 27263
 Telephone (336) 434-2800 • FAX (336) 434-2803
<http://www.hubbell-icd.com>
Sales@hubbell-icd.com