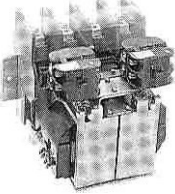


DC Contactor Type 710, 700 Ampere

Type 710

Price List 42710 • March 2010, Replaces February 2006 • Discount Code E45

Order Information	Coil Suffix Table	
<p>➤ Type 710 switches are ordered by Catalog Number as follows:</p> <p>14-193-120-□□-□</p> <p style="margin-left: 40px;">A B C</p> <p>A) First eight digits specifies device type 710 B) Next two digits specify coil voltage per coil voltage suffix table. C) Last digit specifies auxiliary contact arrangement.</p> <p>➤ Dimension Data see page 2 ➤ Replacement Parts see Price List 42000</p>	DC	Suffix
	12	51
	28	52
	36	53
	48	54
	74	56
	96	57
	125	58
	250	59

Illustration	Description	Configuration	Rated Voltage	Catalog No.	Price \$	Approx. Wt. Lbs (kg)
 Type 710	Switch (non-interrupting) with mechanical interlock without auxiliary contact	Dual two pole switch	1500V	14-193-120	\$4,218	38 (17.3)

Main Pole Configuration

Dual Two-Pole single Throw (i.e. two independent two-pole power circuits)

Switch Rating

Continuous Current = 700 amps @ 40°C
 No load break insulation, voltage = 1500V DC
 Thru Current Capability = 15,000 amps
 Special ratings available. Consult factory.

Auxiliary Interlock Rating

Resistance Load
 125V DC or less, 10 amps
 250V DC, 2.5 amps

Mounting

Mounts on 3 in. wide channel support with two 3/8 in. screws.

Power Connections:

Top and bottom of switch
 Two 3/8 in.-16 tapped holes per terminal

Coil Connections

Four 1/4 in. fast-on tabs
 Two tabs each side of line.

Weight

38 lb (17.2 kg)

Auxiliary Contacts^①

Configuration	Suffix	Price \$
1 NO + 3 NC	1	\$504
2 NO + 2 NC	2	\$504
3 NO + 1 NC	3	\$504
4 NO + 0 NC	4	\$504
0 NO + 4 NC	5	\$504
None	7	—

Operating Coils^③

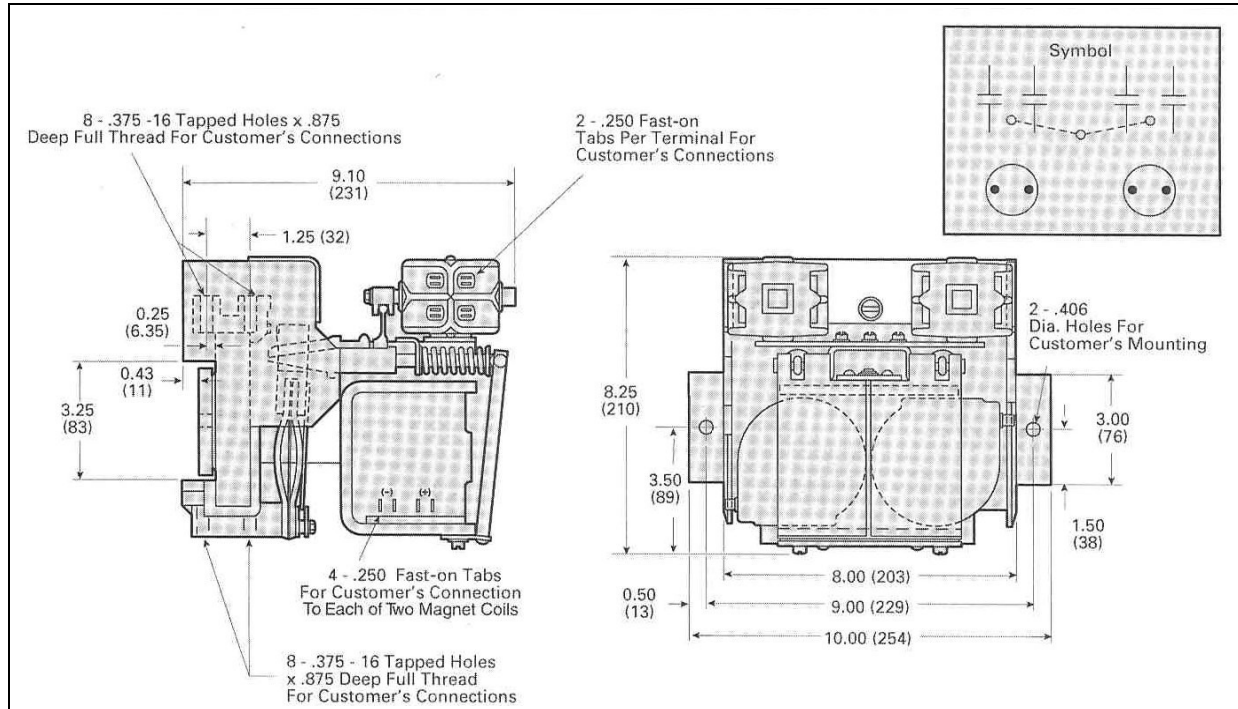
Volts DC	Ohms (20°C)
12	4.9
28	20.0
36	32.0
48	45.0
74	125.0
96	177.0
110 - 125	294.0
250	1160.0

Coil voltage tolerance 80% to 110% of rated voltage.

- ① Priced and supplied as two 4 circuit auxiliaries (1) for forward, (1) for reverse.
- ② Special configurations available. Consult local Hubbell sales office.
- ③ Minimum pickup voltage is 60% of rated coil volts, with cold (20°C) coil and 80% of rated coil volts with hot (140°C) coil. Dropout is from 5% to 25% of rated coil volts. All temperatures in °C.



DC Contactor Type 710, 700 Ampere



All dimensions shown in inches (millimeters). For reference purposes only. Not to be used for design or construction purposes.

Prices subject to change without notice.



Hubbell Industrial Controls, Inc.

A subsidiary of Hubbell Incorporated

4301 Cheyenne Dr., Archdale, NC 27263

Telephone (336) 434-2800 • FAX (336) 434-2803

<http://www.hubbell-icd.com>

sales@hubbell-icd.com