



Hubbell Industrial Controls, Inc.

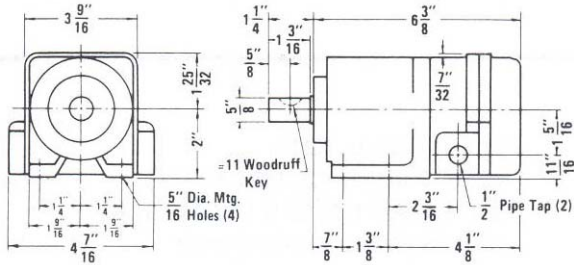
DIMENSIONS

2210

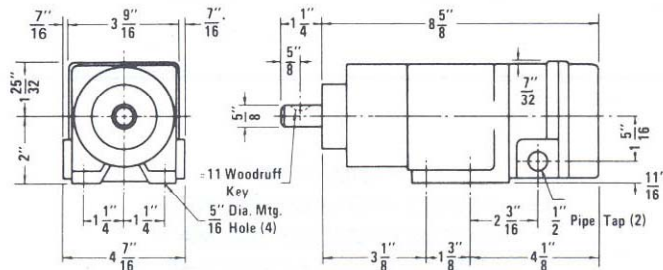
APRIL 1981

REPLACE: JAN. 1978

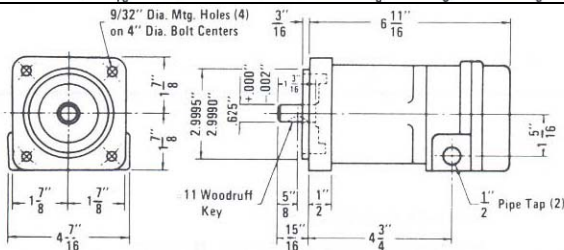
### SPEED RESPONSIVE SWITCH EUCLID TYPE C



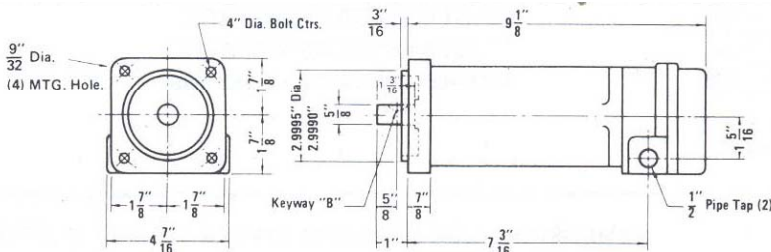
CATALOG NO. 2210-  
NEMA 3/13 SURFACE MOUNTED  
80-3700 RPM/5000 RPM MAX.  
APPROX. WEIGHT 4-1/4 LBS.



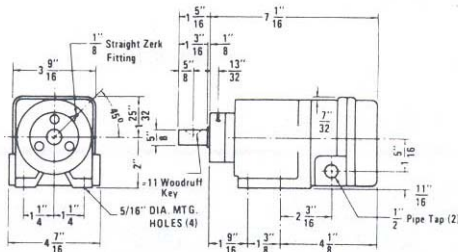
CATALOG NO. 2210-  
NEMA 3/13 SURFACE MOUNTED  
SINGLE SPEED INCREASER  
28-1258 RPM/1700 RPM MAX.  
APPROX. WEIGHT 4-3/4 LBS.



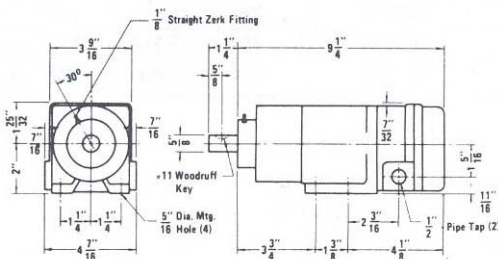
CATALOG NO. 2210-  
NEMA 3/13 FLANGE MOUNTED  
SINGLE SPEED INCREASER 28-1258  
RPM/1700 RPM MAX.  
APPROX WEIGHT 5 LBS.



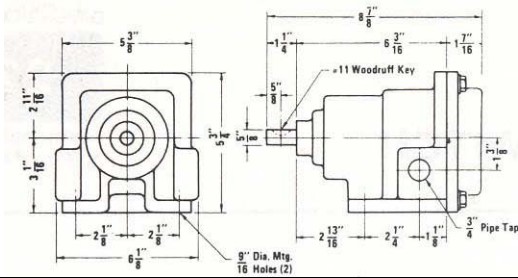
CATALOG NO. 2210-  
NEMA 4 SURFACE MOUNTED  
80-3700 RPM/5000 RPM MAX.  
APPROX. WEIGHT 4-1/2 LBS.



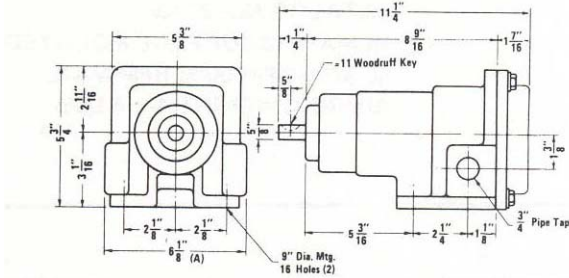
CATALOG NO. 2210-  
NEMA 4 SURFACE MOUNTED  
80-3700 RPM/5000 RPM MAX.  
APPROX. WEIGHT 4-1/2 LBS.



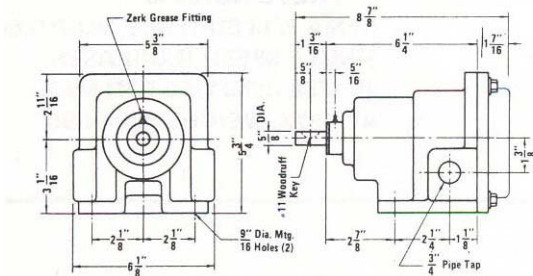
CATALOG NO. 2210-  
NEMA 4 SURFACE MOUNTED  
SINGLE SPEED INCREASER  
28-1258 RPM/1700 RPM MAX.  
APPROX. WEIGHT 4-3/4 LBS.



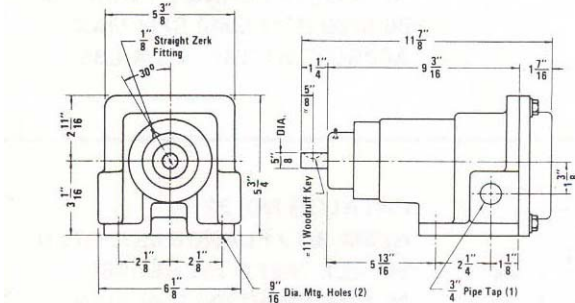
CATALOG NO. 2210-  
NEMA 7 SURFACE MOUNTED  
80-3700 RPM/5000 RPM MAX.  
APPROX. WEIGHT 9-1/2 LBS.



CATALOG NO. 2210-  
NEMA 7 SURFACE MOUNTED  
WITH SINGLE SPEED INCREASER  
28-1258 RPM/1700 RPM MAX.  
APPROX. WEIGHT 11-1/2 LBS.

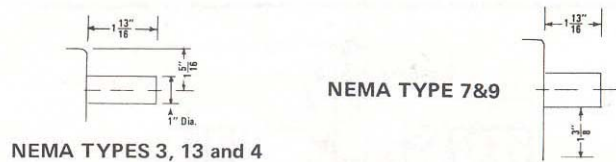


CATALOG NO. 2210-  
NEMA 9 SURFACE MOUNTED  
80-3700 RPM/5000 RPM MAX.  
APPROX. WEIGHT 9-1/2 LBS.

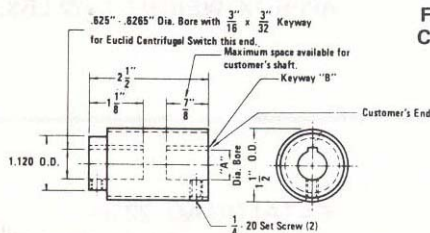


CATALOG NO. 2210-  
NEMA 9 SURFACE MOUNTED  
SINGLE SPEED INCREASER  
28-1258 RPM/1700 RPM MAX.  
APPROX. WEIGHT 11-1/2 LBS.

DIMENSIONS FOR OPTIONAL MANUAL RESET BUTTONS



NEMA TYPES 3, 13 and 4



FLEXIBLE COUPLING

CATALOG NO.	"A"	KEYWAY "B"
30472	0.3939" / 0.3954"	NONE
30349	0.5000" / 0.5015"	0.125" x 0.062"
30350	0.5115" / 0.5120"	0.125" x 0.062"
30352	0.7500" / 0.7515"	0.188" x 0.094"
30353	0.7500" / 0.7515"	0.156" x 0.078"
30351	0.6250" / 0.6265"	0.188" x 0.094"

Approximate dimensions. Do not user for construction purposes.



**Hubbell Industrial Controls, Inc.**  
A subsidiary of Hubbell Incorporated  
4301 Cheyenne Dr., Archdale, NC. 27262  
Telephone (336) 434-2800 • FAX (336) 434-2803  
<http://www.hubbell-icd.com>  
Sales@hubbell-icd.com